

Customer :

customer

Customer part :

customer part

Comment :

Comment

S1=7.69

S2=7.29

Tmax=452

Tp S2=491.0

PI=0.51

HI=118

Sample =1777.30

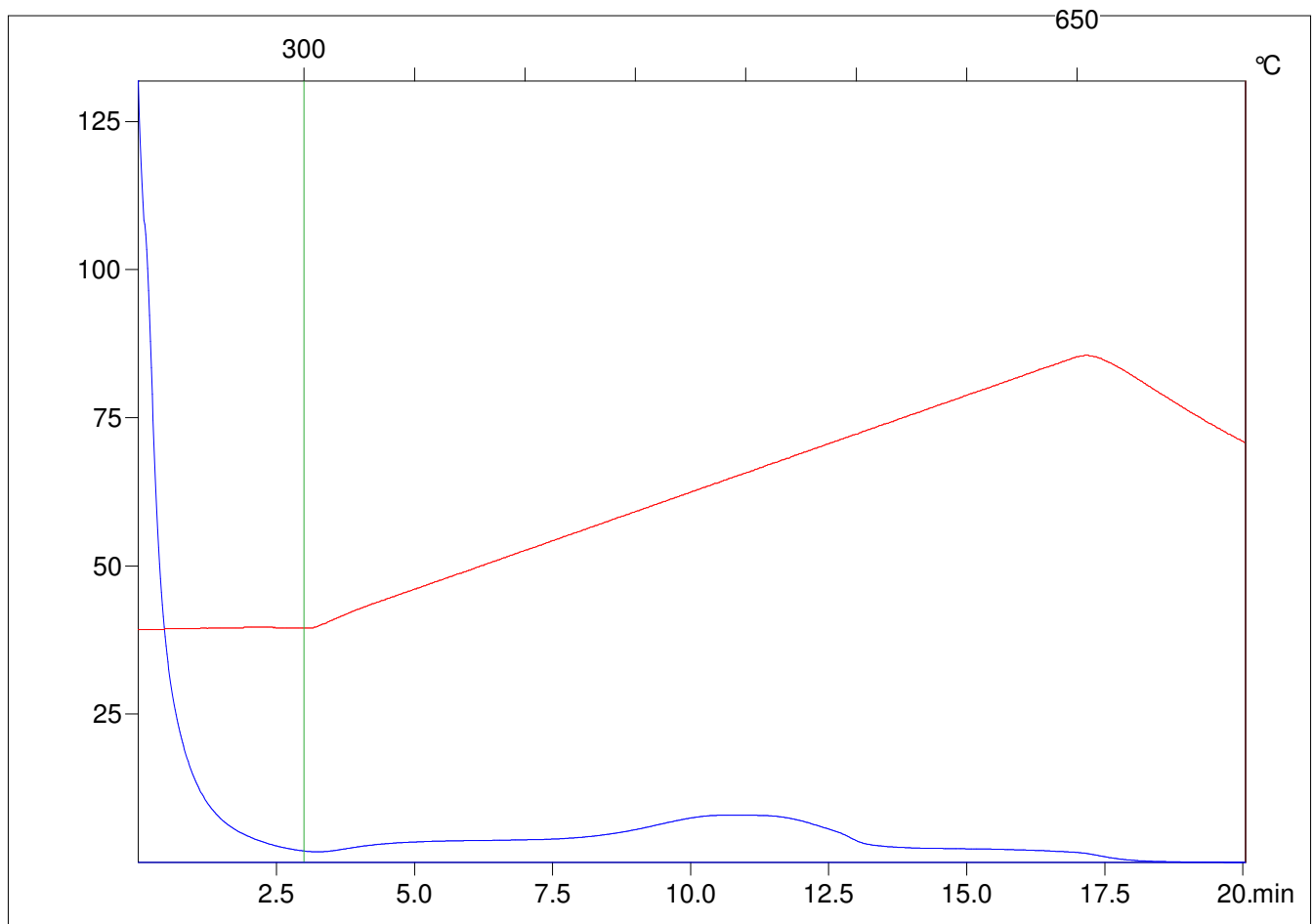
Method =Bulk Rock

Cycle=Basic

KFID(10*9)=1444

Qty =70.1

TOC=6.18



C:\VINC\PK3_1792\PK060.R00 : FID pyrolysis graphic

State Ok

Pyro Status Negative value

Oxi Status Negative value